

SMIX POWER

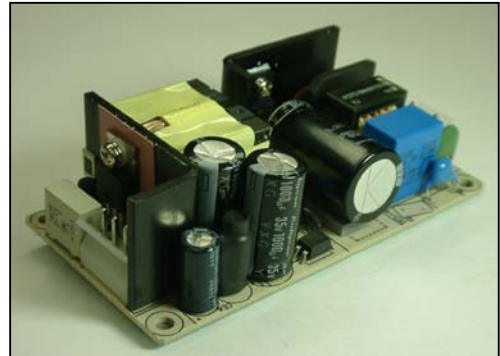
3005 Avenida Simi, Simi Valley, CA 93063
TEL: (805) 582-2804 FAX: (805) 582-2308

UP0601C SERIES

26-65 Watt AC/DC Open Frame

- ◆ Universal Input 90 to 264 VAC
- ◆ EMI Meets FCC/CISPR 22 Class B
- ◆ Continuous Short Circuit Protection
- ◆ MTBF 300Khrs
- ◆ UL/cUL, TUV, and CE approval
- ◆ RoHS Compliant

Green Product
RoHS



SPECIFICATIONS

All specifications are typical at nominal line, full load and 25°C unless otherwise noted.

INPUT SPECIFICATIONS

Input Voltage Range 90-264VAC
Input Frequency 47-63 Hz
Inrush Current 80A max. @230VAC(Cold Start)
40A max. @110VAC(Cold Start)

GENERAL SPECIFICATIONS

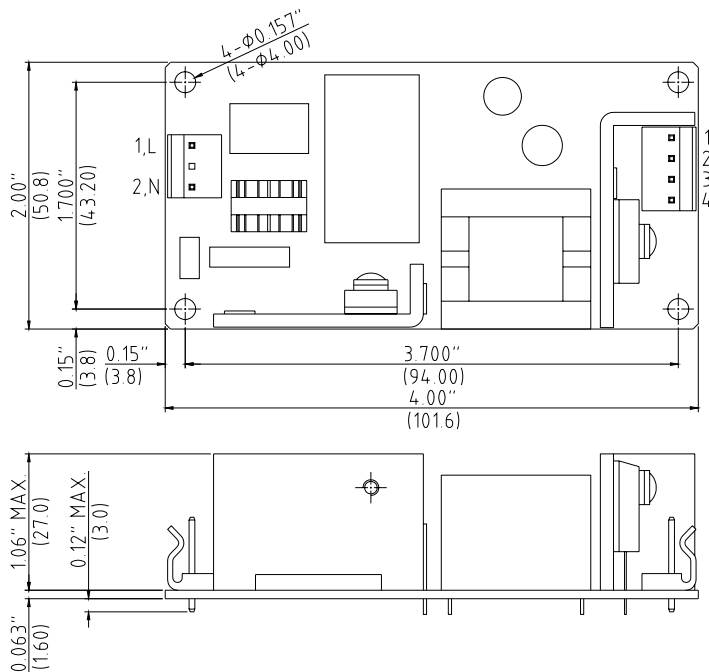
Hold-up Time 10mS typ.
Leakage Current 3mA max.
Short Circuit Protection Continuous
Continuous Output Power 26~60W max.
Hi-pot Isolation: Input / Output 4242 VDC

ENVIRONMENTAL SPECIFICATIONS

Operating Temperature Range 0°C to 70°C
Derating 50°C to 70°C 2%/°C
Temperature Coefficient ±0.02%/°C
Storage Temperature Range -40°C to +85°C
Humidity, Non-Condensing 0 to 95% RH
Cooling Free- Air Convection
EMI Meets FCC/CISPR 22 Class B Specification

OUTPUT SPECIFICATIONS

Model Number	Output Voltage (Volts)	OVP ³	Output Current (Amps)		Max Power (Watt)	Efficiency (typ.)	Ripple ¹ P-P (mV)	Total Regulation ²
			Min.	Rated				
UP0601C-03	3.3	✓	0	8	26.4	72%	50	±4%
UP0601C-05	5	✓	0	8	40	76%	50	±4%
UP0601C-09	9	✓	0	6	54	80%	90	±4%
UP0601C-12	12	✓	0	5.4	65	82%	120	±4%
UP0601C-15	15	✓	0	4.3	65	82%	150	±4%
UP0601C-18	18	✓	0	3.6	65	82%	180	±4%
UP0601C-24	24	✓	0	2.7	65	84%	240	±4%
UP0601C-29	29	✓	0	2.2	65	84%	290	±4%
UP0601C-48	48	✓	0	1.35	65	84%	480	±4%



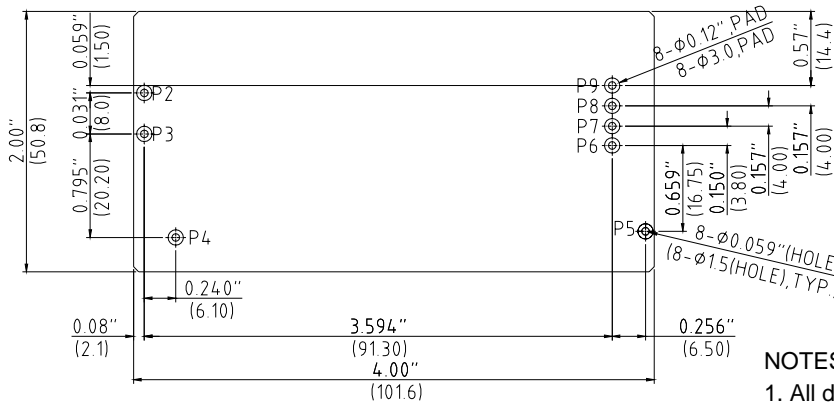
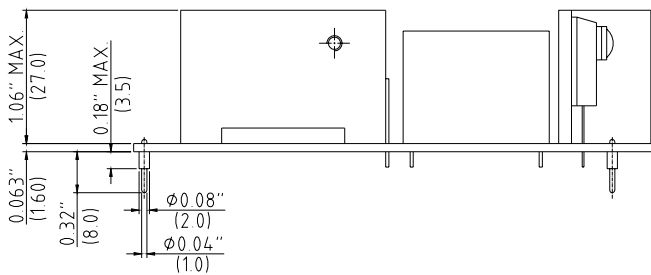
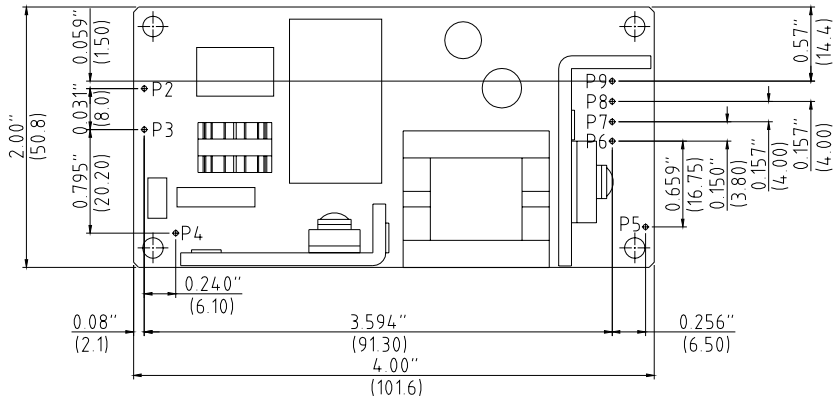
CN1 input connector Molex 09-65-2038 with second pin removed	
Pin	Input voltage
L&N	90-264 VAC

CN2 output connector Molex 09-65-2048 4Pin or equivalent	
Model	
Pin	UP0601C-XX
1	Vo
2	Vo
3	Common
4	Common

NOTES:

1. All dimensions in inches (mm).
2. Tolerance .XX=±0.04", .XXX=±0.010"

UP0601C-XXC1(PCB Mounted type)



PCB layout recommend

NOTES:

1. All dimensions in inches (mm)
2. Tolerance .XX=±0.04", .XXX=±0.010"

PIN Assignment										
UP0601C										
Pin	Description	-03C1	-05C1	-09C1	-12C1	-15C1	-18C1	-24C1	-29C1	-48C1
P4, P5	FG	✓	✓	✓	✓	✓	✓	✓	✓	✓
P2	L	✓	✓	✓	✓	✓	✓	✓	✓	✓
P3	N	✓	✓	✓	✓	✓	✓	✓	✓	✓
P6	Common	✓	✓	✓	✓	✓	✓	✓	✓	✓
P7	Common	✓	✓	✓	✓	-	-	-	-	-
P8	Vo	✓	✓	✓	✓	✓	✓	✓	✓	✓
P9	Vo	✓	✓	✓	✓	-	-	-	-	-