

## ACC-HPS85-3

*Accessory Kit - Metal Casing*



- Metal Chassis & Cover.
- Insulator.
- Mounting Screws and Washers.
- Assembly Instructions.

### ASSEMBLY INSTRUCTIONS

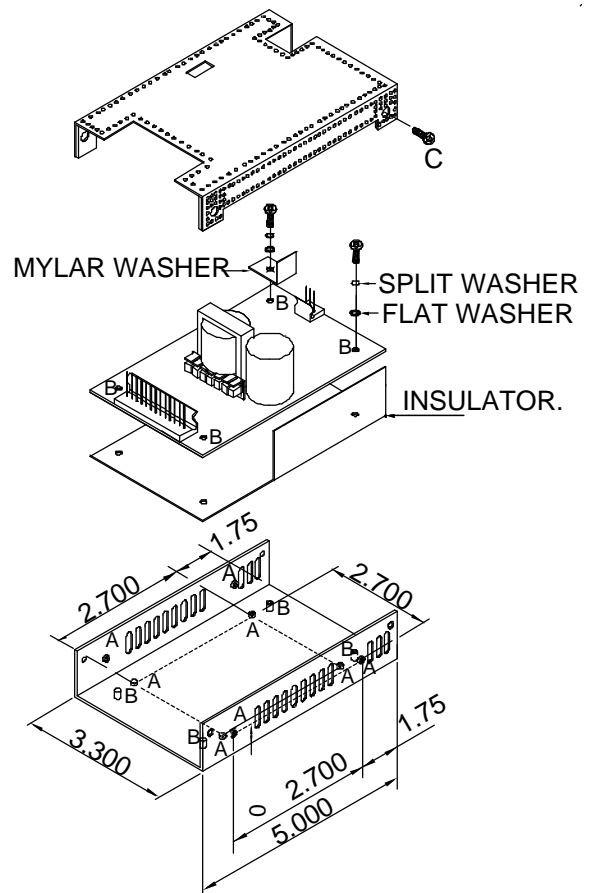
1. Before assembly ensure unit has been turned OFF for at least 10 minutes.
2. "A" denotes customer mounting holes threaded 6-32 ( 8 nos.).  
Maximum penetration into customer mounting hole is 0.10 inch.
3. "B" denotes PSU fixing stand-offs. Use screws 6-32 x 0.25" ( 4 nos.)
4. "C" denotes case assembly points. Use screw CSK M3 x 6mm ( 4 nos.)

Note : When cover is fitted other than by the manufacturer, it is the user's responsibility to ensure that the requirement of the relevant safety agency or agencies are complied with.

### ORDERING INFORMATION

Model : ACC-HPS85-3

### MECHANICAL DETAILS



UNIT : INCH  
GENERAL TOLERANCE : +/- 0.005  
OVERALL SIZE WITH CHASSIS & COVER:  
L5.000X B3.300XH2.000