

## ACC-HPS85-1

Accessory Kit - 'U' Channel



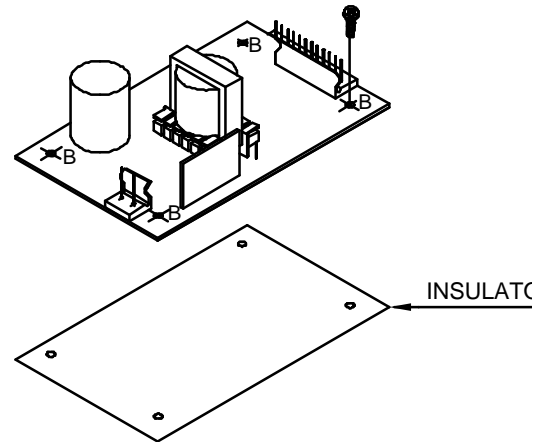
- Metal 'U' Channel.
- Insulator.
- Mounting Screws and Washers.
- Assembly Instructions.

### ASSEMBLY INSTRUCTIONS

1. Before assembly ensure unit has been turned OFF for at least 10 minutes.
2. "A" denotes customer mounting holes threaded 6-32 ( 4 nos.).  
Maximum penetration into customer mounting hole is 0.10 inch.
3. "B" denotes PSU fixing stand-offs. Use screws 6-32 x 0.25" ( 4 nos.)

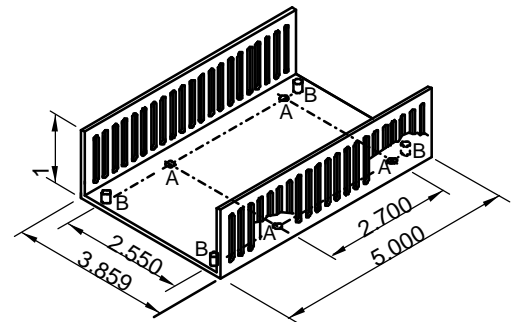
Note : When 'U channel' is fitted other than by the manufacturer, it is the user's responsibility to ensure that the requirement of the relevant safety agency or agencies are complied with.

### MECHANICAL DETAILS



### ORDERING INFORMATION

Model : ACC-HPS85-1



MECHANICAL OUTLINE DIMENSIONS  
UNIT : INCH  
GENERAL TOLERANCE : +/- 0.005  
OVERALL SIZE WITH CHASSIS & COVER:  
L5.000X B3.859XH1.733