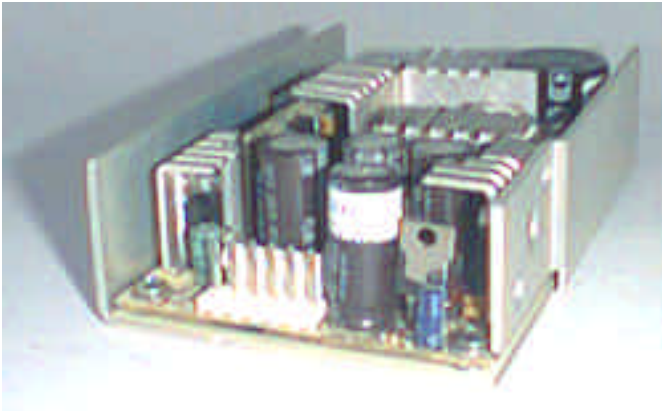


ACC-GPS65-1

Accessory Kit - 'U' Channel.



- 'U' Channel.
- Insulator.
- Mounting Screws and Washers.
- Assembly Instructions.

ASSEMBLY INSTRUCTIONS

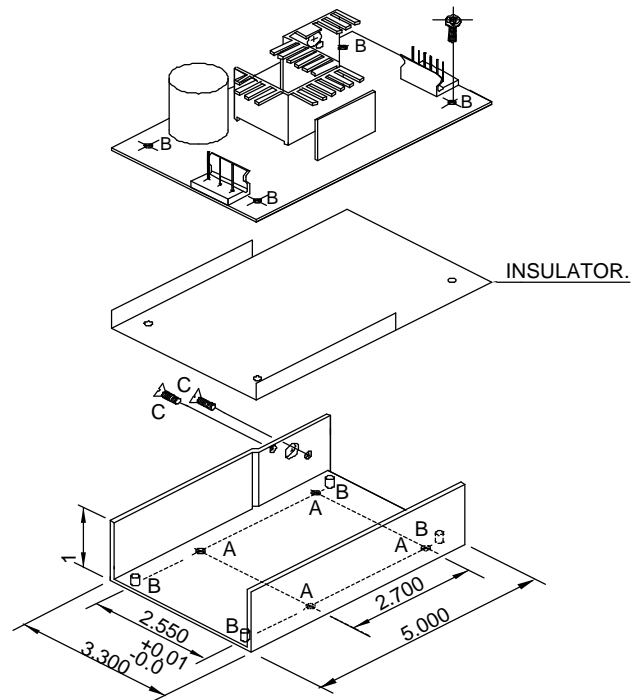
1. Before assembly ensure unit has been turned OFF for at least 10 minutes.
2. "A" denotes customer mounting holes threaded 6-32 (4 nos.).
Maximum penetration into customer mounting hole is 0.10 inch.
3. "B" denotes PSU fixing stand-offs. Use screws 6-32 x 0.25" (4 nos.)
4. "C" denotes U channel assembly points with heat sink.
Use screw CSK M3 x 6mm (2 nos.)

Note : When 'U Channel' is fitted other than by the manufacturer, it is the user's responsibility to ensure that the requirement of the relevant safety agency or agencies are complied with.

ORDERING INFORMATION

Model : ACC-GPS65-1

MECHANICAL DETAILS



MECHANICAL OUTLINE DIMENSIONS
UNIT : INCH
GENERAL TOLERANCE : +/- 0.005
OVERALL SIZE :
L5.000X B3.300XH1.500